



The network of the future

Feel as though you were right there among the national football team at the World Cup in Brazil – from your own armchair at home. 3D TV is one of the features of the bandwidth-driven market. The changeover of the transmission infrastructure to fibre optics is being pursued with great intensity – but this is just one aspect of the technology.

What else is required? Cable network providers are focusing further development on the HFC structure from Docsis 3.0 to Docsis 3.1 and also CCAP technology (Converged Cable Access Platform).

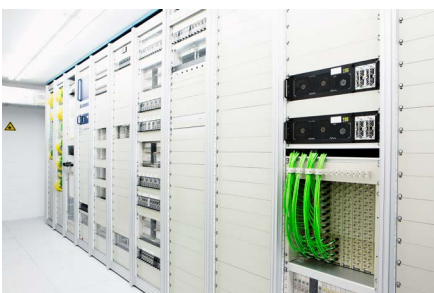
Segment network engineering is a key aspect in implementing the very latest technologies. In order to keep customer impact as low as possible, technicians of the engineering team generally carry out installation and migration work on the existing active network during the night-time hours of 12 midnight to 6 am.

Expertise, precise preparation and exact coordination with the customer and network operator help staff keep a cool head in handling these tricky changeover operations.

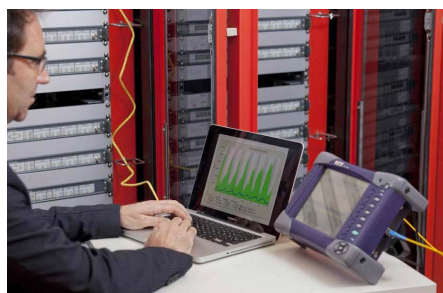
The gradual, evolutionary introduction of DOCSIS 3.1 and transitions on the network side will provide downstream rates of 10 Gbit/s and upstream rates of 1 Gbit/s in the medium term via cable networks.

With the new generation of CCAP, TV signals and IP connections no longer require a separate infrastructure but are supplied via a combined platform. CCAP – the method of choice in pursuing the all-IP trend in the cable network sector.

So if you're the one passing the ball back tomorrow – it means we were there!



Installation



Configuration